

45-60

RECORDED IN
OFFICIAL RECORDS

1985 APR -4 AM 8 45

CLEARING & PLANTING
CHARLOTTE COUNTY, FLA.

Return

This instrument prepared by:
W. Eugene Williams, Jr., Esquire
825 S. Tamiami Trail, Suite 2
Venice, Florida 33595

DEVELOPER'S SECOND AMENDMENT
TO DECLARATION OF CONDOMINIUM
OF
ENGLEWOOD BEACH & YACHT CLUB,
A CONDOMINIUM

YACHT CLUB RESORTS & DEVELOPMENT, INC., a Florida corporation, is the owner and Developer of the condominium project known as ENGLEWOOD BEACH & YACHT CLUB, as shown in the Declaration of Condominium recorded in O. R. Book 696, pages 1012 - 1075 and as per plat shown in Condominium Book 3, Pages 49A through 49H, Public Records of Charlotte County, Florida.

The Developer files this Amendment pursuant to Article XXIII - PHASE CONDOMINIUM and pursuant to F.S. 718.403; and in accordance with Article XI - METHOD OF AMENDMENT OF DECLARATION and pursuant to F.S. 718.110. This amendment does not change the configuration or size of any condominium unit in any material fashion; the amendment does modify the appurtenances to the unit, and changes the proportion of percentage by which the owner of the parcel shares the common expenses and owns the common surplus; and this amendment is for the purpose of including the land on which Phase III is located.

The Declaration of Condominium is hereby amended as follows:

O.R. Book 696, Page 1013
I - SUBMISSION STATEMENT
see Reference to Exhibit
No. 1, O.R. Book 696, Pages
1039 - 1046.

The legal description is now to include the land on which PHASE III is located on, as shown in Exhibit 1.

Note: Exhibit 1, also known as the mini plats for recording purposes, is being amended and re-recorded to correct errors found by the developer and architect pertaining to Phase III to reflect that the upstairs level contains three units and the downstairs level contains four units.

O. R. Book 696, Page 1015
III - COMMITTING A UNIT TO
INTERVAL OWNERSHIP.

PHASE III has one two-story wood frame building with 7 units (three units on upper level and four units on lower level). This building is further described in the plot plans, Exhibit 1, and the amended plot plans recorded herewith. Adding PHASE III will increase the unit weeks by 357, for a total unit weeks for Phase I, II and III of 1,071. Unit Week 50 is not included in this total as to each unit and is reserved for maintenance.

RECORD VERIFIED - Barbara T. Sprott, Clerk
By: *Bartchell*, C. C.

OR 811 PG 1157

FILE 85-707403

O.R. Book 696, Page 1075 -
"Declaration Exhibit No. 5"
Percentage of Ownership;
Percentage Interest in Units

D. If Phases I, II & III are
committed to condominium
ownership the percentages will be
as follows:

PERCENTAGE OF OWNERSHIP

Each unit within the condominium will have a 1/21st interest
in and to the common elements and the common surplus and shall be
responsible for 1/21st of the common expenses of the condominium.

PERCENTAGE INTEREST IN UNITS

<u>Unit Week Numbers Owned</u>	<u>Percentage share in remainder for each week owned</u>
1 to 52 (not include wk 50)	1.9607843
50 (reserved for maint.)	-0-

The Declaration of Condominium is further amended as
follows:

The amended plot plans referenced as Exhibit 1, and
rerecorded herewith will correct the dimensions of the units for
Phase II, which dimension errors were found by the developer and
architect and known to be technical errors.

IN WITNESS WHEREOF, YACHT CLUB RESORTS & DEVELOPMENT, INC.,
a Florida corporation, has caused this Declaration of Condominium
Amendment to be executed by its duly authorized officers this

4 day of April, 1985.

IN THE PRESENCE OF:

YACHT CLUB RESORTS & DEVELOPMENT,
INC., a Florida corporation

[Signature]
[Signature]

BY: [Signature]
Charles A. Rose
Vice President

Attest: [Signature]
Secretary

STATE OF FLORIDA
COUNTY OF CHARLOTTE

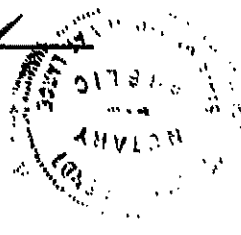
BEFORE ME, a Notary Public in and for the State of Florida,
County of Charlotte, duly authorized to take acknowledgments,
personally appeared Charles A. Rose, Vice President, and
CHARLES A. ROSE, Secretary, respectively, of
YACHT CLUB RESORTS & DEVELOPMENT, INC., a Florida corporation, to
me well known and they acknowledged before me that they executed,
sealed, and delivered the foregoing Declaration of Condominium
Amendment for the uses and purposes therein expressed, as such
officers, by authority and on behalf of said corporation as the
free act and deed of said corporation.

IN WITNESS WHEREOF, I have hereunto set my hand and official
seal at Englewood, Florida, County of Charlotte, State of
Florida, this 4 day of April, 1985.

[Signature]
Notary Public

My Commission Expires:

Notary Public State of Florida at Large
My Commission Expires Feb. 9, 1988
Bonded by Troy Fain Insurance Inc.



OR 811 PG 1158

OR 811 PG 1159

ENGLEWOOD BEACH AND YACHT CLUB

AN INTERVAL OWNERSHIP CONDOMINIUM RESORT

AT MANASOTA KEY, ENGLEWOOD, FLORIDA



MANASOTA KEY
APR 1978
W.A. LINDH, P.L.S. 1808

MASTER DESCRIPTION

Lots 14, 25 & North 1/4 of Lot 29, S. 1/4 E. Chancery Sub-Div, P.B. 2, P. 50, CHARLOTTE COUNTY, FLORIDA. CONTAINING 121 ACRES ±
 PHASE I: Lot 25, 30± ACRES. PHASE II: North 1/4 Lot 29, 41± ACRES. PHASE III: Lot 24, 50± ACRES.

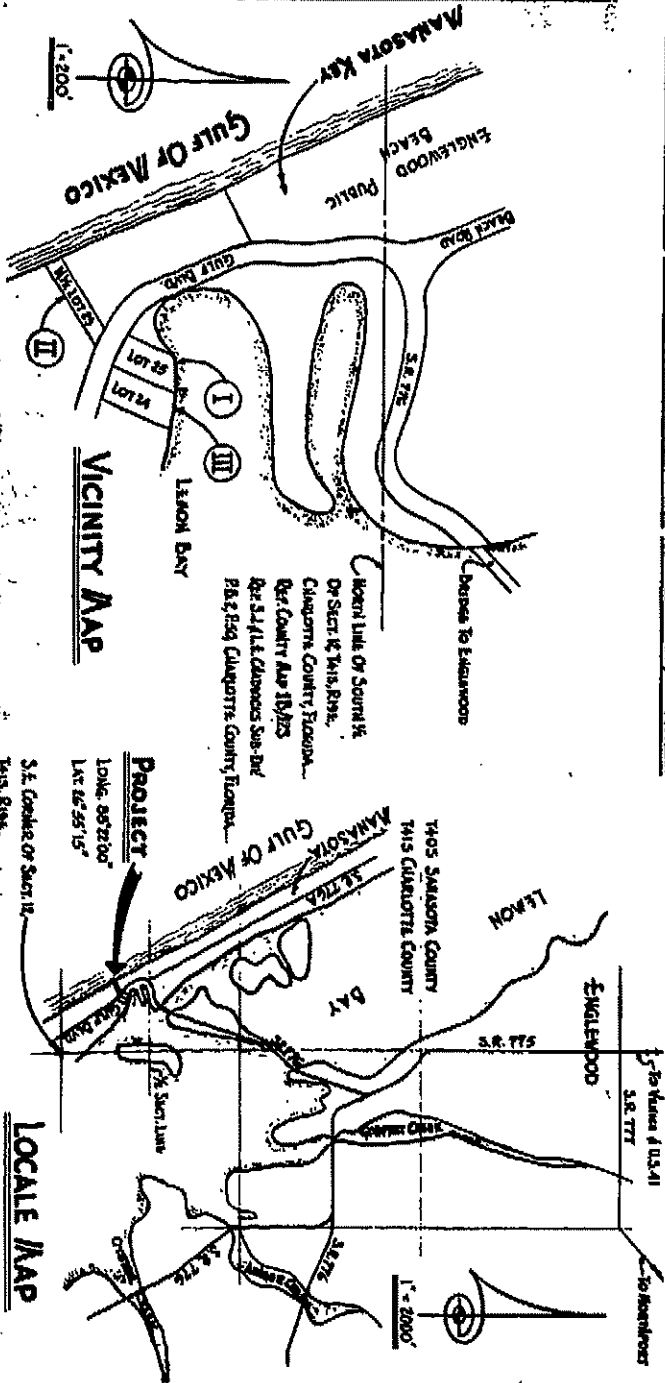
Amended 1/24/78
 SHEET INDEX

- | | |
|------------------|-------------------------|
| 1. Desc & Maps | 5. Phase III Plat |
| 2. Master Plat | 6. Phase I Apr Limits |
| 3. Phase I Plat | 7. Phase II Apr Limits |
| 4. Phase II Plat | 8. Phase III Apr Limits |
- NOTE: SEE GENERAL NOTES ON SHEET NO. 7
 A 50% PHASE I & II FL. APPLS.

NOTE: SEE GENERAL NOTES ON SHEET NO. 7
 # APPLY TO ALL 3 PHASES.

Commo Book Page

Sheet 1 of 6



PROJECT
 Lot 25, 30± ACRES
 Lot 24, 50± ACRES
 S. 1/4 E. 775
 CHARLOTTE COUNTY, FLORIDA

LOCALE MAP

ENGLEWOOD BEACH AND YACHT CLUB

AN INTERVAL OWNERSHIP CONDOMINIUM RESORT

AT ANASOTA KEY, ENGLEWOOD, FLORIDA



1/24/05
4/12/02
Wm. Lindor, P.L.S. #1300

Condo Book Page

SHEET 20 of 8

AMENDED 1/24/05
LEGEND FOR APT. UNIT NO.'S

PHASE I: Floor Apr. No. I-1, II-2, III-5

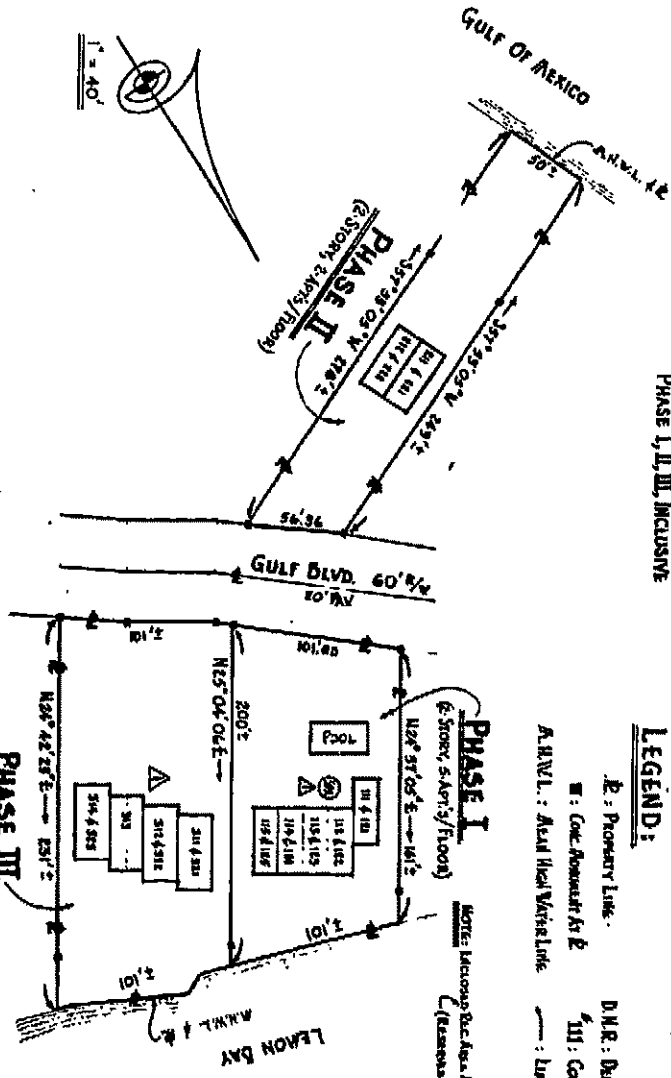
MASTER PLAT

PHASE I, II, III, INCLUSIVE

LEGEND:

- Ⓔ: PROPERTY LINE
- Ⓕ: OWNER'S RESERVATION
- Ⓖ: CONDO. AREA UNIT NO.
- Ⓖ: DUNE OR DIVISION OF APT. NO.
- Ⓖ: AREA NEAR WATERSIDE
- Ⓖ: DUNE OR DIVISION OF APT. NO.

NOTE: INCORPORATE AREA TO COMMON ROOM IN PHASE I (REFER TO PH. 1)



△ (2-Story, 4-Acre Apt. Floor, 2-Acre Apt. Floor)
(6th Floor Over, Non-Unit)



1/24/65
4/12/62
102762
M. LIND, R.L.S. #1506

ENGLEWOOD BEACH AND YACHT CLUB

AN INTERVAL OWNERSHIP CONDOMINIUM RESORT

AT MANASOTA KEY, ENGLEWOOD, FLORIDA

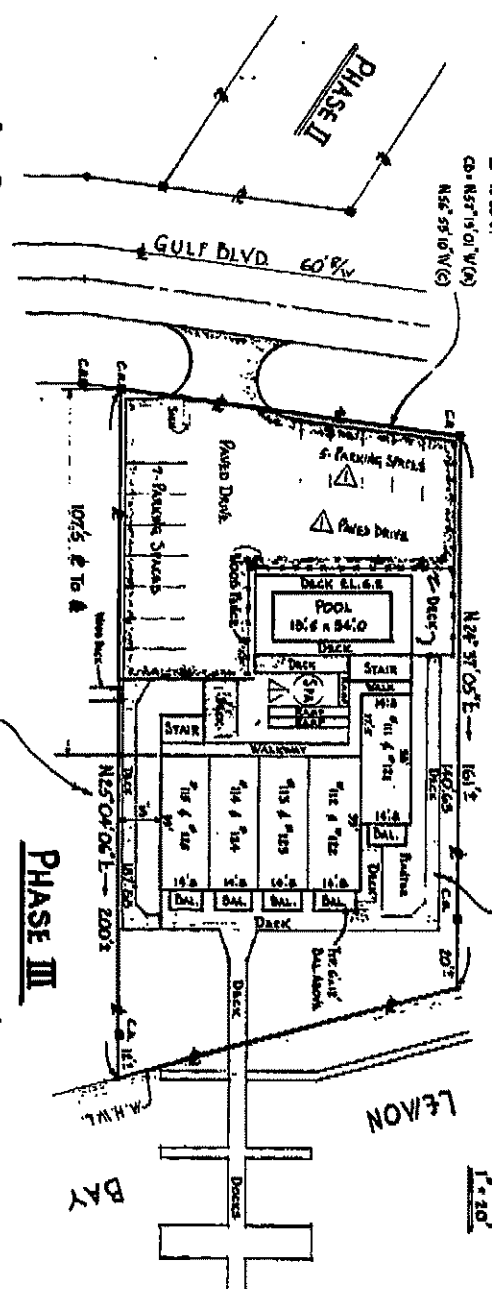
Condo Book Page

SHEET 5 OF 8

As Amended (1/24/65)

PHASE I DESCRIPTION

Lot 25, On S. L. E. Casanova Sub-Div.,
Plat Book 2, Page 50, Charlotte County, Florida



SURVEYOR'S CERTIFICATION:

I, The Undersigned, a Professional Land Surveyor, Authorized to Practice in the State of Florida, hereby Certify that this Exhibit Together with the Provisions of the Declaration Describing the Condominium Property, is an Accurate Representation of the Location & Dimensions of the Proposed Improvements, Also that the Identification, Location, and Dimensions of Each Unit, and the Common Elements Can be Determined From These Materials.

LEGEND:

- ▬ : Property Line
- ▬ : Center Line
- : Contourment of P.C.M.
- M.W.L. : Mean High Water Line
- ▲ : Building Line
- : Iron Pipe

Two Stone Mason Fence Along
with 60" Iron Chain Link
Concrete Foundation
(Reserved by Declaration)



1/24/85
 W.A. Lindy, R.L.S. # 1308
 Surveyor

ENGLEWOOD BEACH AND YACHT CLUB

AN INTERVAL OWNERSHIP CONDOMINIUM RESORT

AT MANASOTA KEY, ENGLEWOOD, FLORIDA

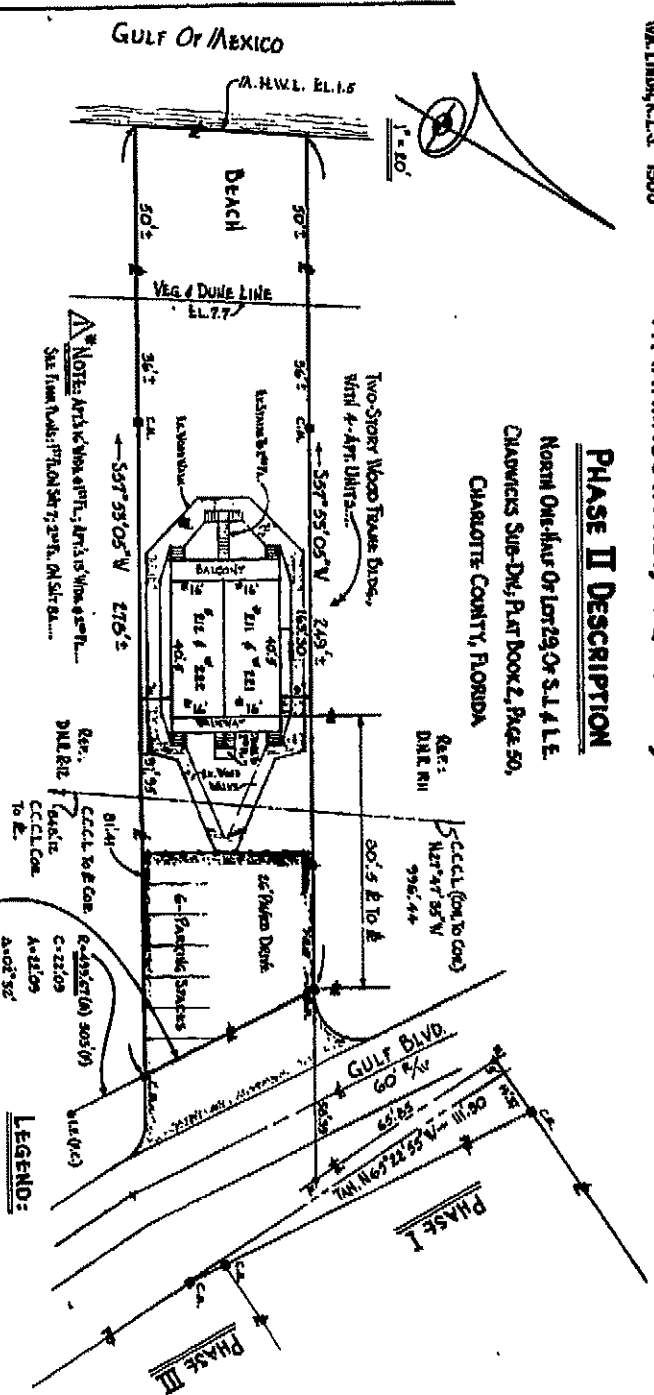
Combo Book Page

Sheet 4 of 8

As Amended (1/24/85)

PHASE II DESCRIPTION

North One-Half of Lot 29, Or S.L. & L.E.
 CHAROTICKS SUB-DIV, Part Book 2, Page 50,
 CHARLOTTE COUNTY, FLORIDA



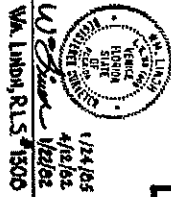
SURVEYOR'S CERTIFICATION:

I, The Undersigned, a Professional Land Surveyor, Authorized to Practice in the State of Florida, whose Certificate This bearing together with the Provisions of the Declaratory Decree and the Condominium Property Act, All Accurate Representation of the Location & Dimensions of the Property hereinafter, also that the instrument, location, and dimensions of each unit, and the Common Elements can be determined from these Bearings.

LEGEND:

- ☐ : Property Line
- : Center Line
- ⋮ : Ten-foot Line
- : R.R. Conc. Boundary
- ▲ : Beach High Water Line
- ☉ : Dept. of Natural Resources
- : Iron Pipe, 12" dia.
- ⊕ : Building Line

OR 81; PG 1164

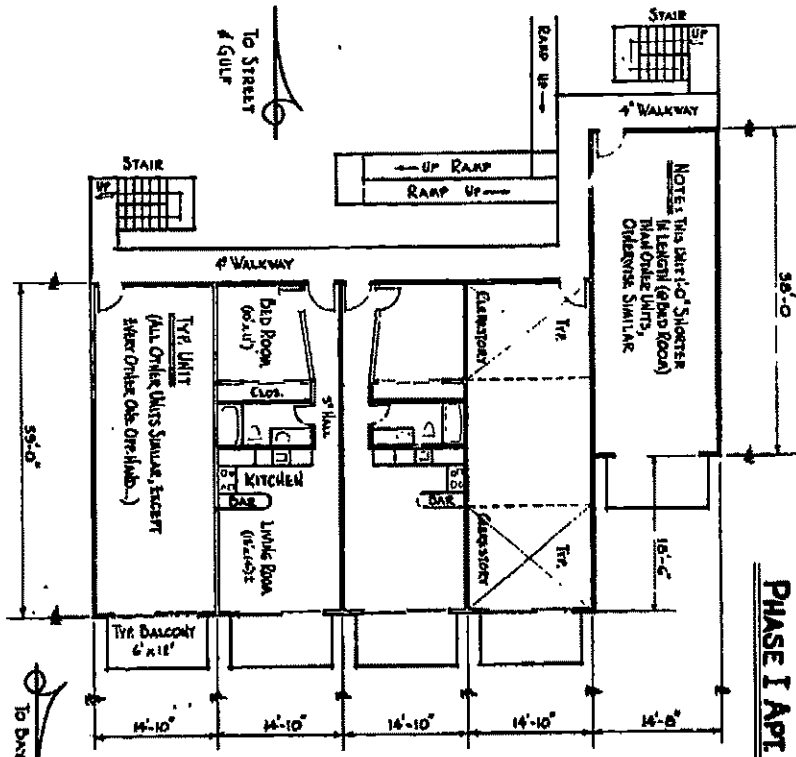


ENGLEWOOD BEACH AND YACHT CLUB

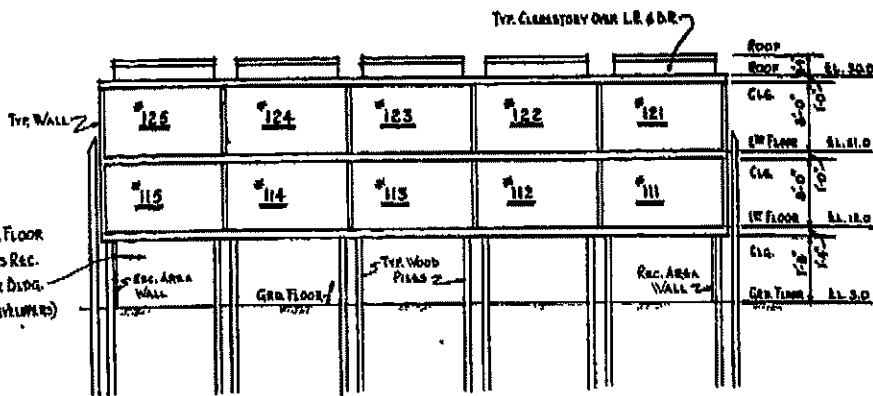
AN INTERVAL OWNERSHIP CONDOMINIUM RESORT

AT MANASOTA KEY, ENGLEWOOD, FLORIDA

PHASE I APT UNITS



FLOOR PLAN 1/8" = 1'-0"
 (1ST & 2ND FLOORS SIMILAR; GRD FLOOR IS ENCLOSED REC. AREA)
 (REVISED BY DEVELOPER)



ELEVATION SECTION 1/8" = 1'-0"
 (FACING THE BAY)

NOTE:
 ENTIRE GRD. FLOOR
 ENCLOSED AS REC.
 AREA, UNDER DEVG.
 (REVISED BY DEVELOPER)

△ AMENDED (1/24/85)

Sheet 6 of 8

Condo Book Page



W. L. Linton
Professional Engineer
License No. 1122108
State of Florida

ENGLEWOOD BEACH AND YACHT CLUB

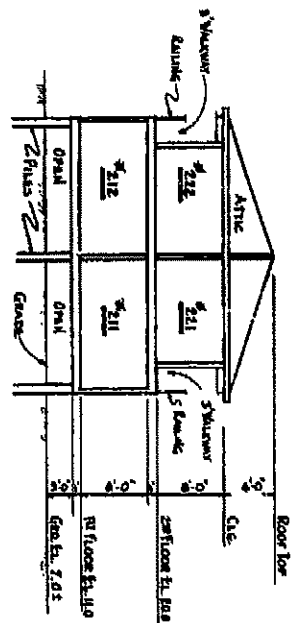
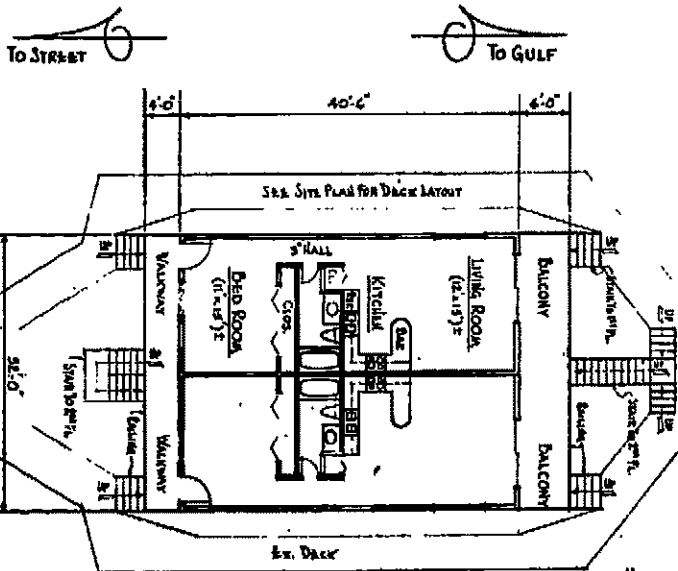
AN INTERVAL OWNERSHIP CONDOMINIUM RESORT

AT MANASOTA KEY, ENGLEWOOD, FLORIDA

PHASE II APT. UNITS

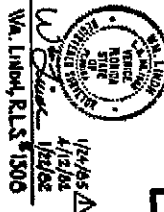
AMENDED (1/24/85)

Condo Book Page
Sheet 7 of 8



GENERAL NOTES:

- Condo Plans, Sheets 1 thru 6, are Excluded 1) To Description of Condominium...
- Condominium Plans are: Foundation, Slabs, Beams, Columns, Balcony, Deck, Pool, Spa, Gym, Storage, etc.
- Phase I is the Existing Condominium Units, Phase II is a New 5-Unit, Block 4 Units.
- For Ass't. Information Showed Hereon, See Description of Condo For Construction.
- Attic's Refer to U.S.C.G. Bureau Plans, With R.S.L. At Floor, and W.L. At E.L. 11'.
- Floor Plans Show All Construction, Other, Outside Quarters, Etc. To Be Built.
- Attention of Engineer for Unit Plans has of Show, With Various Markings For Unit Contours.
- Space Deck's Showed has to be in Space 8'-5" for Unit Deck's Area As Shown.
- For Unit Information Room Deck's Area America, Other, Distinction, Etc. Refer to Section.
- For Apr. Utility 11'9", See Sheet 2, For Location of Room's Storage, Deck, Thermostat, Etc.

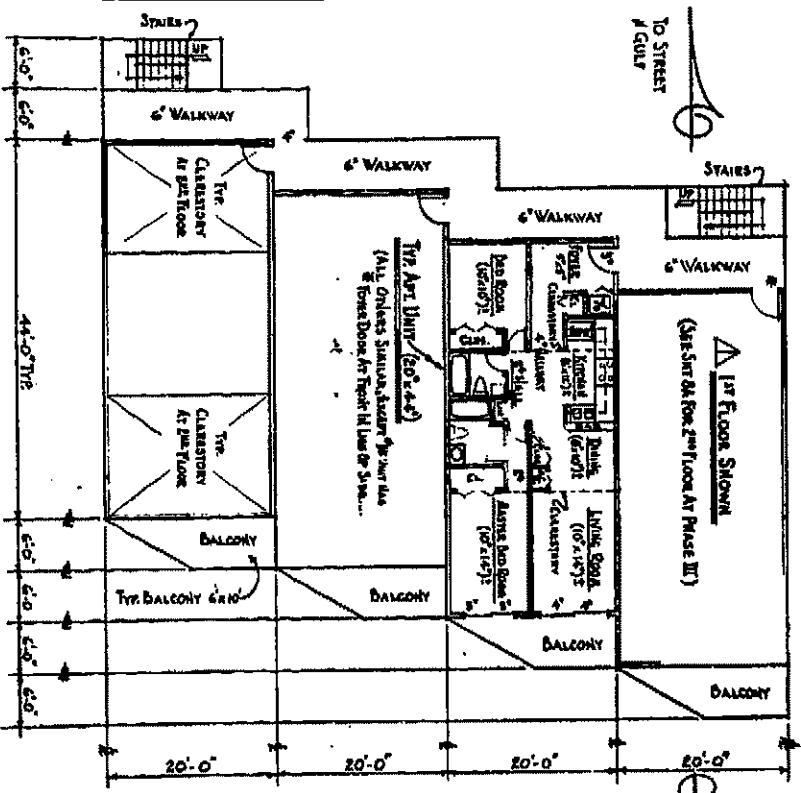


ENGLEWOOD BEACH AND YACHT CLUB

AN INTERVAL OWNERSHIP CONDOMINIUM RESORT

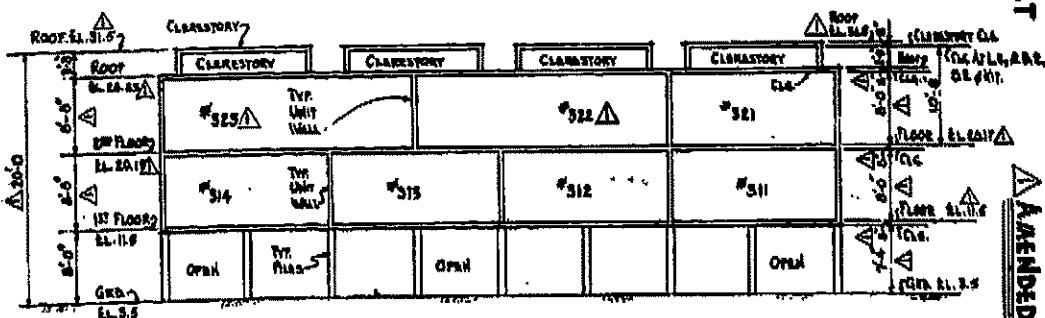
AT ANASOTA KEY, ENGLEWOOD, FLORIDA

PHASE III APT. UNITS



1st FLOOR PLAN 1/8" = 1'-0"

NOTES: 1ST & 2ND FLOORS DIS-SIMILAR; SEE SHT. 04 FOR 2ND FL.



ELEVATION SECTION 1/8" = 1'-0"

(FACING THE BAY)

AMENDED (1/24/85)